

## CN800

USB VGA KVM over IP Mini



# Simple, Secure, and Sustainable Remote Management

KVM over IP Agility..0U Rackspace Efficiency.

Network

**CN800**  
USB VGA KVM over IP Mini

As digital infrastructure expands across cloud, edge, and on-premise environments, resilience and agility have become operational priorities. Secure, out-of-band remote access is no longer just an IT convenience – it’s a strategic capability that reduces downtime, safeguards continuity, and enables teams to manage critical systems from anywhere.

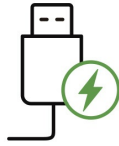
To address this need, the CN800, a compact 0U, hardware-based KVM over IP solution, delivers secure, always-available, BIOS-level remote access to a single server or computer – without the need for software installation. Using standard TCP/IP communication over a Cat 5e/6 connection, it provides full, secure control of the connected system via WinClient and JavaClient across an intranet or remotely from anywhere.

With native VGA support – still the most common display interface in server hardware – the CN800 ensures broad compatibility and reliable remote management, all without adding rack overhead

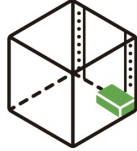
or operational complexity.



BIOS-Level Access



Bus-Powered



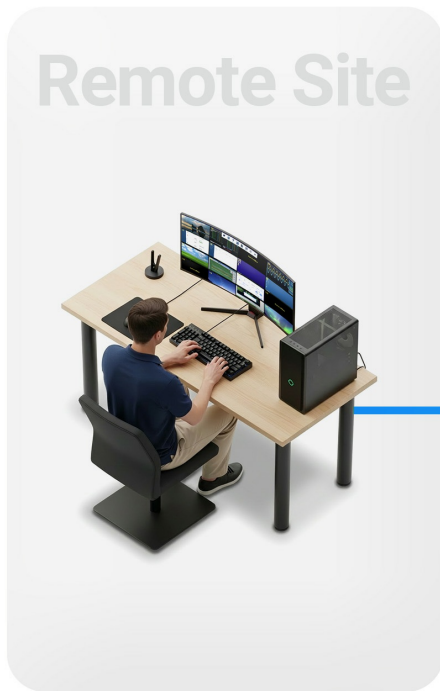
0U Form Factor



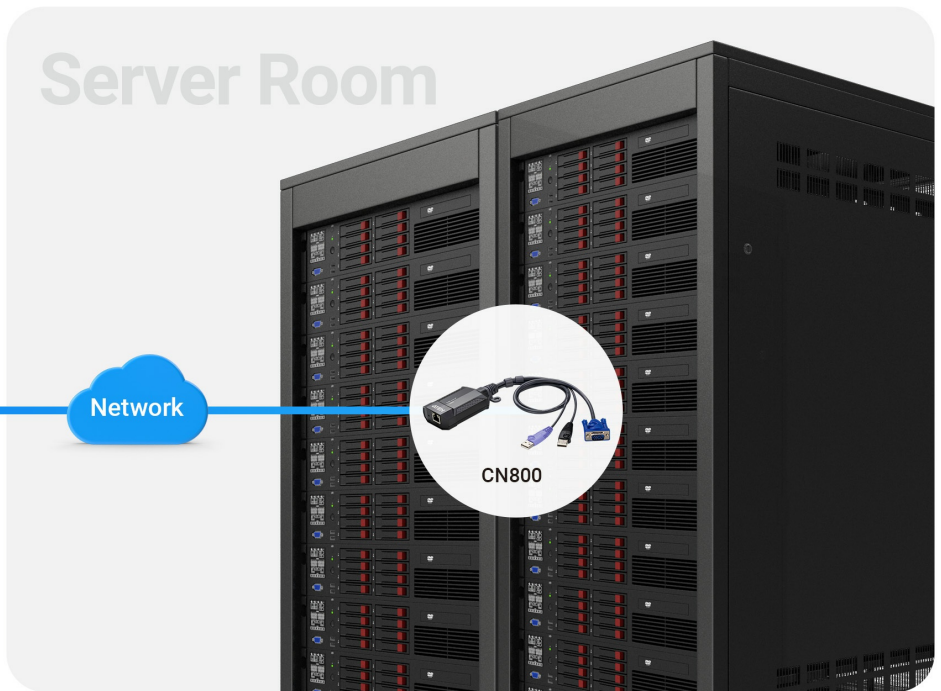
Multi-platform Support



Virtual Media



Remote Site



Server Room

Network



CN800

**BIOS-Level KVM over IP Solution**

The CN800 KVM over IP Mini empowers administrators with full remote control and BIOS-level access to the connected server or computer. Transmitting only keyboard, video, and mouse signals, this secure, hardware-based solution functions as a virtual remote desktop without exposing the system to software-level vulnerabilities.

**Easy Hook for Workspace Efficiency**

The CN800 blends perfectly into any workspace environment (e.g., under the desk) with its compact, easy-hook design, de-cluttering desktop space for improved productivity. This makes it ideal for any office or work-from-home setup.



**Superior Video Performance**

The CN800 supports VGA input resolutions up to 1920 x 1200 @ 60 Hz with 24-bit color depth, ensuring clear, responsive video content for every remote session.

**Industry-Standard Security with Virtual Media**

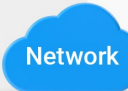
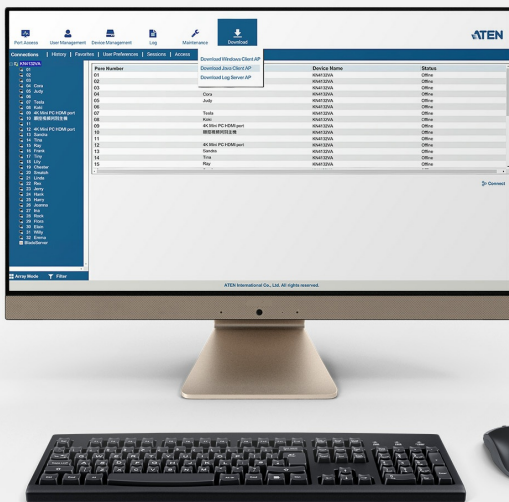
Remote operations are protected by TLS 1.2 and 256-bit AES data encryption, ensuring that virtual media functions, such as firmware upgrades, diagnostics, and software patching, remain as secure and reliable as if performed locally, maintaining total data integrity.



# Remote

WinClient or JavaClient

Windows, macOS X, Linux, Sun



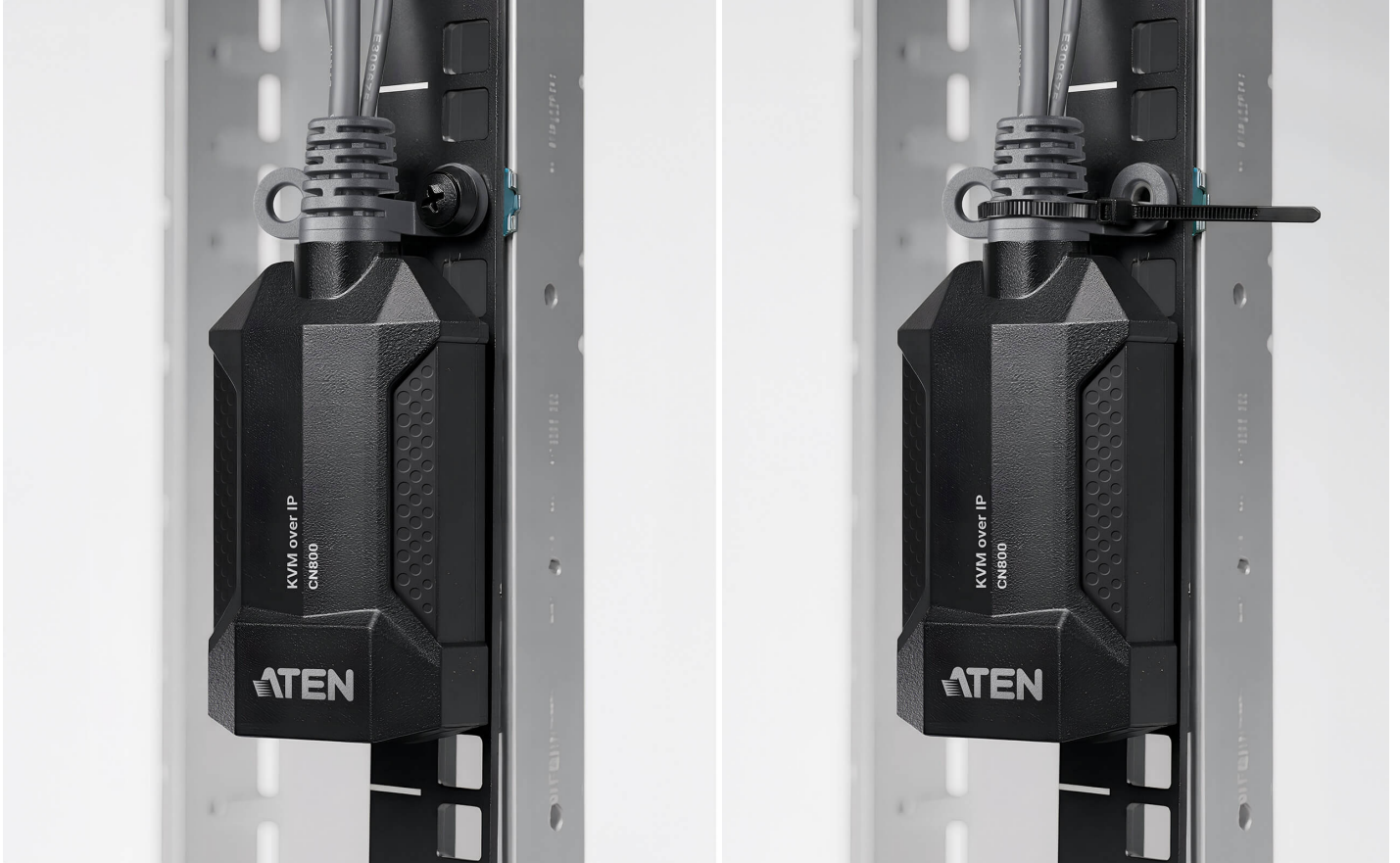
# Server

**Multi-platform Support**

Using standard TCP/IP communication over a Cat 5e/6 connection, the CN800 provides full and secure control of the connected system – whether Windows, macOS X, Linux, or Sun – through WinClient or JavaClient, either across an intranet or remotely from anywhere.

**Compact, 0U Housing, Lightweight**

With its compact, lightweight 0U design (weighing only 170 grams) and a unique hook for easy rack placement – whether fastened with a cable tie or secured using a cage nut – the CN800 delivers reliable server management with flexible, space-efficient deployment, ideal for modern data centers and mobile IT environments.



**Applications**

With secure remote access at its core, the CN800 is ideal for IT administrators and professionals seeking an effective, efficient solution for server management across data centers, production lines, or remote work environments.



**Server Room**

**Production Line**

**Work from Home**

**Talk to Our Experts**

If you prefer to have ATEN contact you, please complete the form and a representative will be in touch with you shortly

First Name \*

Last Name \*

- Country \*

Company \*

Email \*

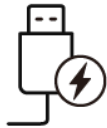
Phone Number \*

- Customer Type \*

Job Title \*



BIOS-Level Access



Bus-Powered



0U Form Factor



Multi-platform Support



Virtual Media

## Features

### • Hardware

- Provides over-IP capability to KVM switches that do not have built in over-IP functionality
- Supports multi-platform server environments: Windows, Mac, Sun, Linux and VT100 based serial devices
- Virtual Media Support
- High video resolution – up to 1920 x 1200 @ 60 Hz with 24 bit color depth for remote sessions
- Enhanced FPS (frames per second) throughput for crisp responsive video display
- Bus-powered – no external power adapter required

### • Management

- Up to 64 user accounts
- Up to 32 users concurrent logins
- End session feature – administrators can terminate running sessions
- Event logging and Windows-based Log Server support
- Supports instant notification of critical system events via email, SNMP trap, and Syslog
- Remote firmware upgradable
- Multi-user Mode allows multiple users to gain access to a server simultaneously
- Integration with ATEN [CC2000](#) Centralized Management Software
- Integration with ATEN [CCVSR](#) Video Session Recording Software
- DDNS (Dynamic Domain Name System)
- Enable / disable browser operation
- IPv6 capable

### • Easy-to-Use Interface

- Browser-based and AP GUIs offer a unified multi-language interface to minimize user training time and increase productivity
- Multi-platform client support (Windows, Mac OS X, Linux, Sun)
- Multi-browser supports (Chrome, Firefox, Safari, Opera)
- Browser-based UI in pure Web technology allows administrators to perform administrative tasks without pre-installed Java software package required
- Full-screen or sizable and scalable Virtual Remote Desktop

### • Advanced Security

- External authentication supports: RADIUS, LDAP, LDAPS, and MS Active Directory
- TLS 1.2 encryption to protect password when users log in
- Flexible design allows users to choose any combination of encryption algorithms (e.g. 256-bit AES) or systemgenerated random selection for independent keyboard / mouse, video, and virtual media data encryption
- Supports for IP / MAC Filter
- Supports password protection
- Private CA

### • Virtual Media

- Virtual media enables file applications, OS patching, software installation and diagnostic testing
- Works with USB enabled servers in operating system and BIOS level
- Supports USB 2.0 DVD / CD drives, USB mass storage devices, PC hard drives and ISO images
- Convenient to use without virtual media cable

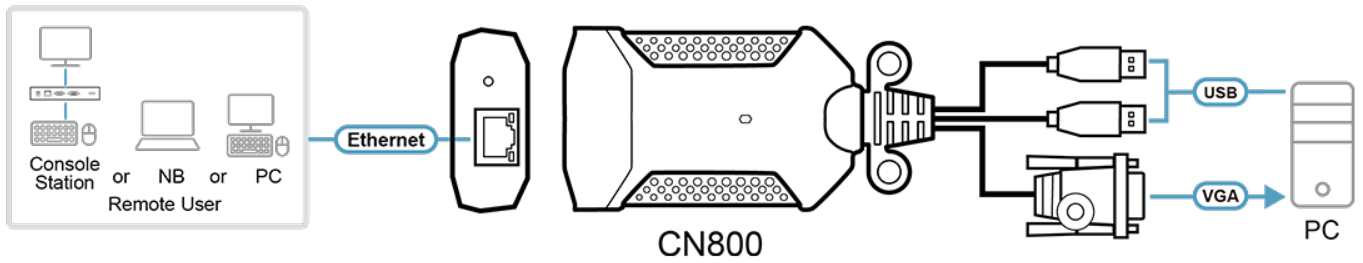
### • Virtual Remote Desktop

- Video quality and video tolerance can be adjusted to optimize data transfer speed; monochrome color depth setting, threshold and noise settings for compression of the data bandwidth in low bandwidth situations
- Full screen video display or scalable video display
- Message Board for communication among remote users
- On-screen keyboard with multi-language support
- Mouse Dynasync
- Exit Macros support
- BIOS-level access

**Specifications**

Connectors	
KVM (Computer) Ports	1 x USB Type A Male (Purple) 1 x USB Type A Male (Black) 1 x VGA Male (Blue)
LAN Ports	1 x RJ-45 Female
Switches	
Reset	1 x Semi-recessed Pushbutton
LEDs	
Power	1 (Green)
Link	1 x Link (Orange / Green) 1 x Active (Green)
Emulation	
Keyboard / Mouse	USB
Video	1920 x 1200
Power Consumption	DC5V:3.47W:16BTU/h  Note: ● The measurement in Watts indicates the typical power consumption of the device with no external loading. ● The measurement in BTU/h indicates the power consumption of the device when it is fully loaded.
Environmental	
Operating Temperature	0 - 50°C
Storage Temperature	-20 - 60°C
Humidity	0 - 80% RH, Non-condensing
Physical Properties	
Housing	Plastic
Weight	0.17 kg ( 0.37 lb )
Dimensions (L x W x H)	9.32 x 5.66 x 2.44 cm (3.67 x 2.23 x 0.96 in.)
Note	For some of rack mount products, please note that the standard physical dimensions of WxDxH are expressed using a LxWxH format.

Diagram



**ATEN International Co., Ltd.**

3F., No.125, Sec. 2, Datong Rd., Sijhih District., New Taipei City 221, Taiwan  
Phone: 886-2-8692-6789 Fax: 886-2-8692-6767  
www.aten.com E-mail: marketing@aten.com



© Copyright 2015 ATEN® International Co., Ltd.  
ATEN and the ATEN logo are trademarks of ATEN International Co., Ltd.  
All rights reserved. All other trademarks are the property of their respective owners.