

VS4812

2-Port True 4K HDMI Splitter



essentials



2-Port True 4K HDMI Splitter



VS4812

Superior Video

3D | Deep Color | HDR10+

Input



HDMI x1

Output



HDMI x2



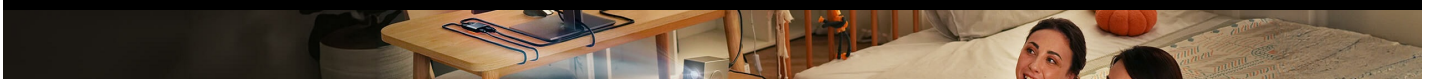
HDCP 1.4/2.2



Accent Light

Premium Audio

DTS-HD Master Audio™ | Dolby® TrueHD



Stunning True 4K Visuals - Stable, Reliable Dual-Display Output



The ATEN CS845 is a True 4K (4096 x 2160) splitter designed to handle demanding 4K content, professional, and broadcast grade 4K applications. It provides flexible dual display (DD) output to the display simultaneously without loss of quality. HDCP 2.2 and HDCP 2.3 compliance ensure quality, high frame rate display operation. CS845 supports 4K@60Hz, 4K@30Hz and 4K@24Hz. CS845 also supports 4K@60Hz and 4K@30Hz. CS845 is a reliable, compact, and easy-to-use device for 4K content delivery and display.



Aesthetic.

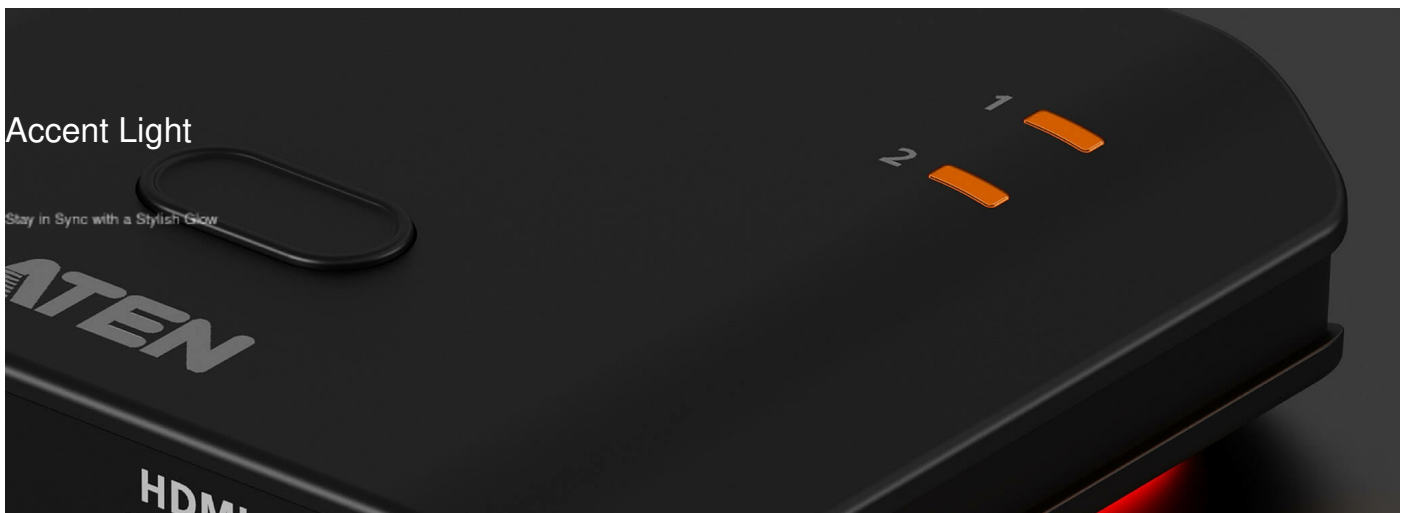
Compact.

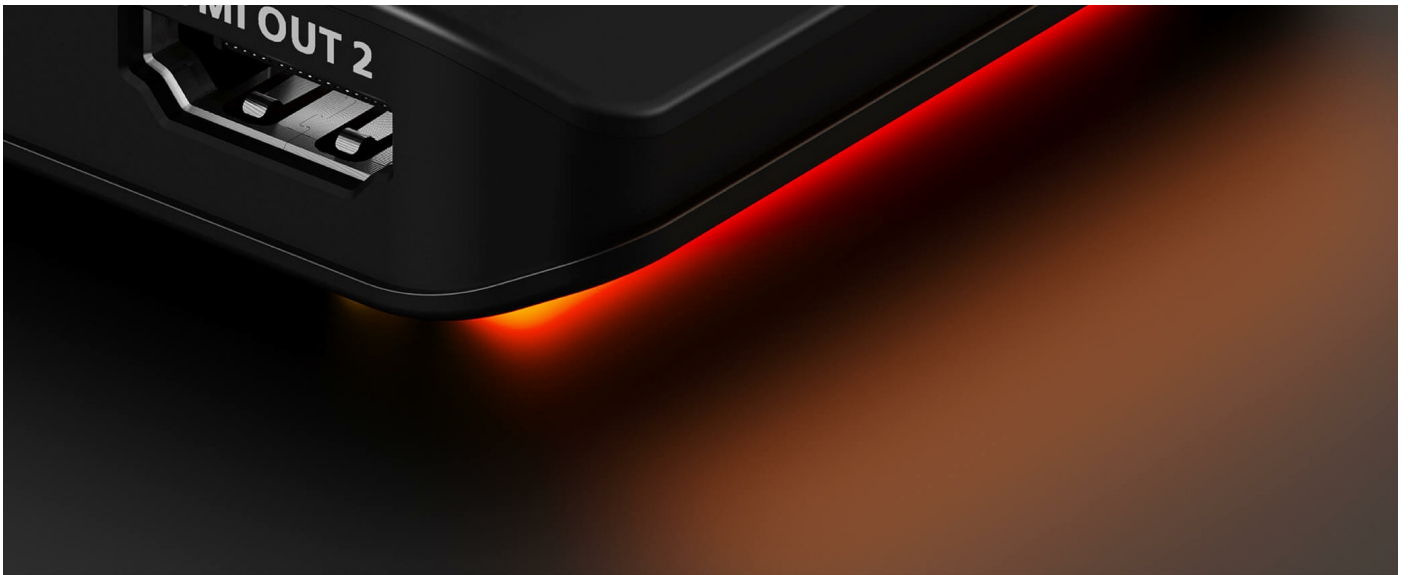
Portable.



Accent Light

Stay in Sync with a Stylish Glow



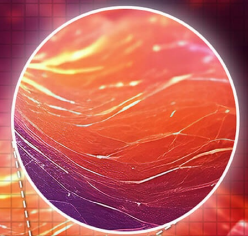


True 4K + HDR

Crisp, Ultra High-Def Clarity



FHD



True 4K + HDR

Broad Device Compatibility

Works with a wide range of input and output devices.



1 input

EDID Sync™
Optimal video distribution

Plug-and-Play



2 outputs



One-Touch Screen Off

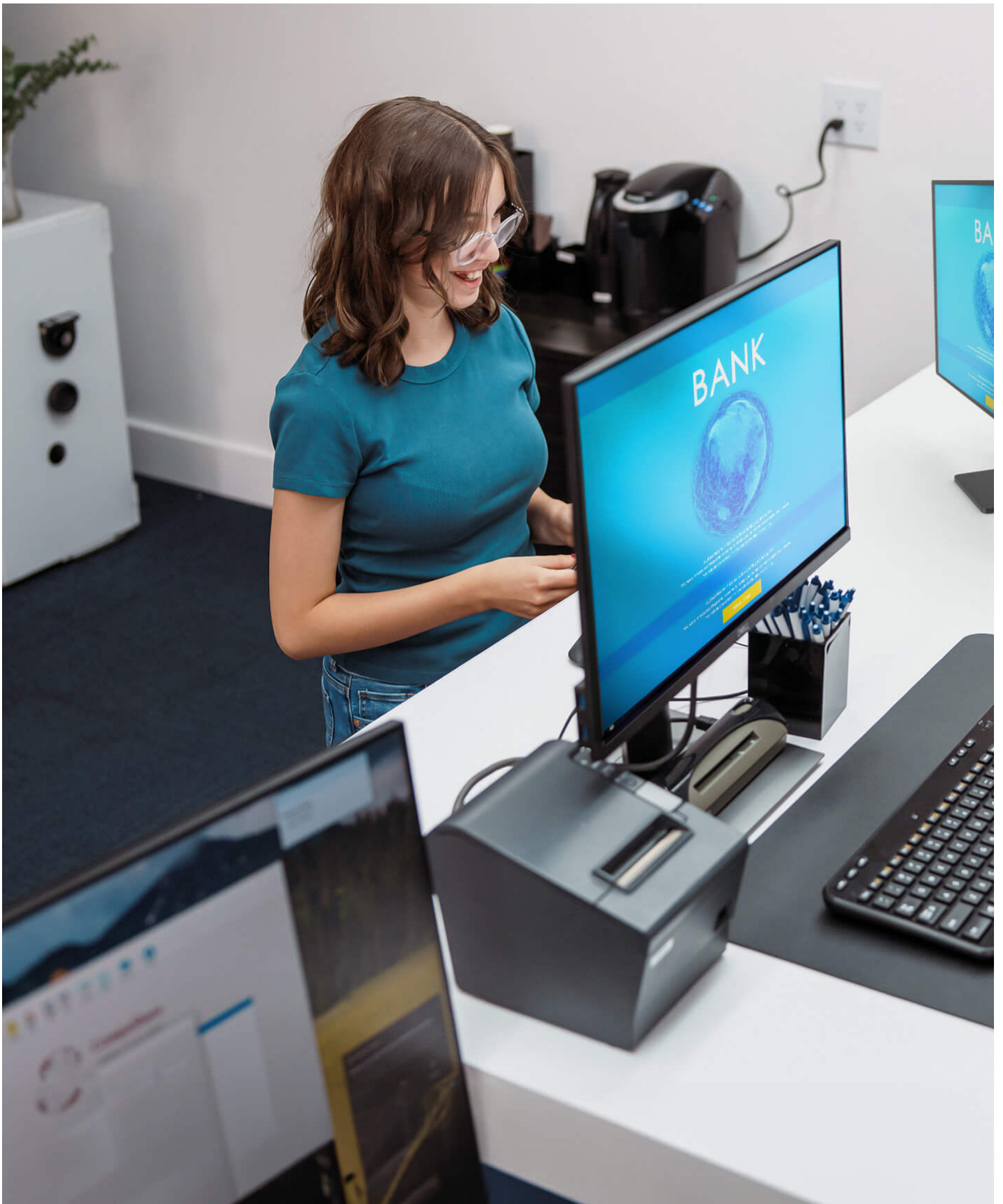
Switch off the second display with a simple press of the pushbutton.











What's in the Box



2-Port True 4K HDMI Splitter

VS4812



USB Power Cable
Type-C to Type-A
(1 m)

Talk to Our Experts

If you prefer to have ATEN contact you, please complete the form and a representative will be in touch with you shortly

First Name *

Last Name *

- Country *

Company *

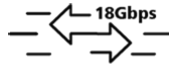
Email *

Phone Number *

- Customer Type *

Job Title *





18Gbps Max.
Bandwidth



Accent Light



Compact
Design

Features

- EDID Sync™ Smart Display Optimization
 - Automatically optimizes resolutions and prevents display issues for flawless display presentation

- True 4K Dual-Display Sharing
 - Shares one HDMI source across two True 4K displays for double the visual impact with uncompromised quality

- HDMI 3D/Deep Color, HDR10+, HDCP 2.2 Compatible
 - Guarantees stable performance, broad compatibility, and superior image quality

- Master-Class Audio Immersion
 - Full support for LPCM 7.1, Dolby® & DTS-HD Master Audio™ delivers theatrical-quality surround sound

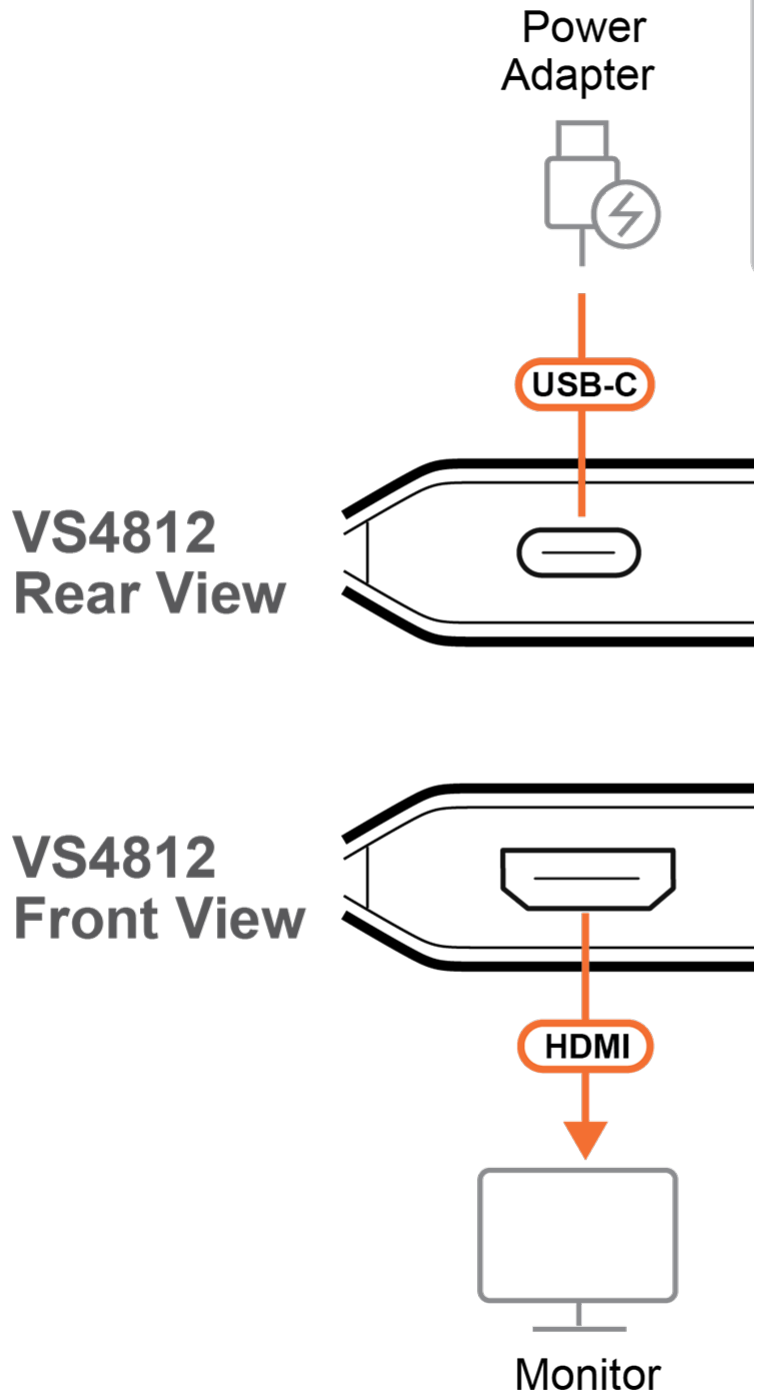
- Pushbutton Output Control
 - Instantly enables or disables HDMI out 2 with a press of the pushbutton for intuitive, hands-on display management

- Aesthetic Compact Form
 - Slim profile and stylish accent lighting allow integration into any space, perfectly complementing your setting

Specifications

Video Input	
Interfaces	1 x HDMI Type A Female (Black)
Impedance	100 Ω
Max. Distance	3m at 3840x2160 @ 60Hz (4:4:4)
Video Output	
Interfaces	2 x HDMI Type A Female (Black)
Impedance	100 Ω
Max. Distance	3m at 3840x2160 @ 60Hz (4:4:4)
Video	
Max. Data Rate	18 Gbps (6 Gbps Per Lane)
Max. Pixel Clock	600 MHz
Compliance	HDMI (3D, Deep Color, 4K) HDCP 2.2 Compatible
Max. Resolution	3840 x 2160 @ 60Hz (4:4:4)
Audio	
Input	1 x HDMI Type A Female (Black)
Output	2 x HDMI Type A Female (Black)
Connectors	
Power	1 x USB-C (5V/1A)
LEDs	
LED Indicator	2 x Port Indicator (Orange)
Power	2 (Orange, Bottom Side)
Cable Length	
USB Cable	1 x USB Type-C to Type-A (1m)
Environmental	
Operating Temperature	0-40 °C
Storage Temperature	-20 - 60 °C
Humidity	0 - 80% RH, Non-Condensing
Physical Properties	
Housing	PC
Weight	0.03 kg (0.07 lb)
Dimensions (L x W x H)	6.10 x 5.65 x 1.52 cm (2.4 x 2.22 x 0.6 in.)
Carton Lot	20 pcs
Note	For some of rack mount products, please note that the standard physical dimensions of WxDxH are expressed using a LxWxH format.

Diagram





Simply Better Connections

ATEN International Co., Ltd.

3F., No.125, Sec. 2, Datong Rd., Sijhih District., New Taipei City 221, Taiwan
Phone: 886-2-8692-6789 Fax: 886-2-8692-6767
www.aten.com E-mail: marketing@aten.com



© Copyright 2015 ATEN® International Co., Ltd.
ATEN and the ATEN logo are trademarks of ATEN International Co., Ltd.
All rights reserved. All other trademarks are the property of their
respective owners.