

CS22HF

2-Port USB FHD HDMI Cable KVM Switch



Work Smarter with Smaller



- All-in-One
- Easy Hook
- Control 2x PC
- USB Peripheral
- Bus-Powered
- 1920x1080 @60Hz
- HDMI

CS22HF
2-Port USB FHD HDMI Cable KVM Switch
One Click for Cross-Platform Integration



HDMI™ FHD
HIGH-DEFINITION MULTIMEDIA INTERFACE

References to and representations of compatible products, such as those produced by Apple are not intended to suggest any endorsement or sponsorship by or affiliation with those product manufacturers.

2 PCs Share One Set of Keyboard, Mouse and Monitor

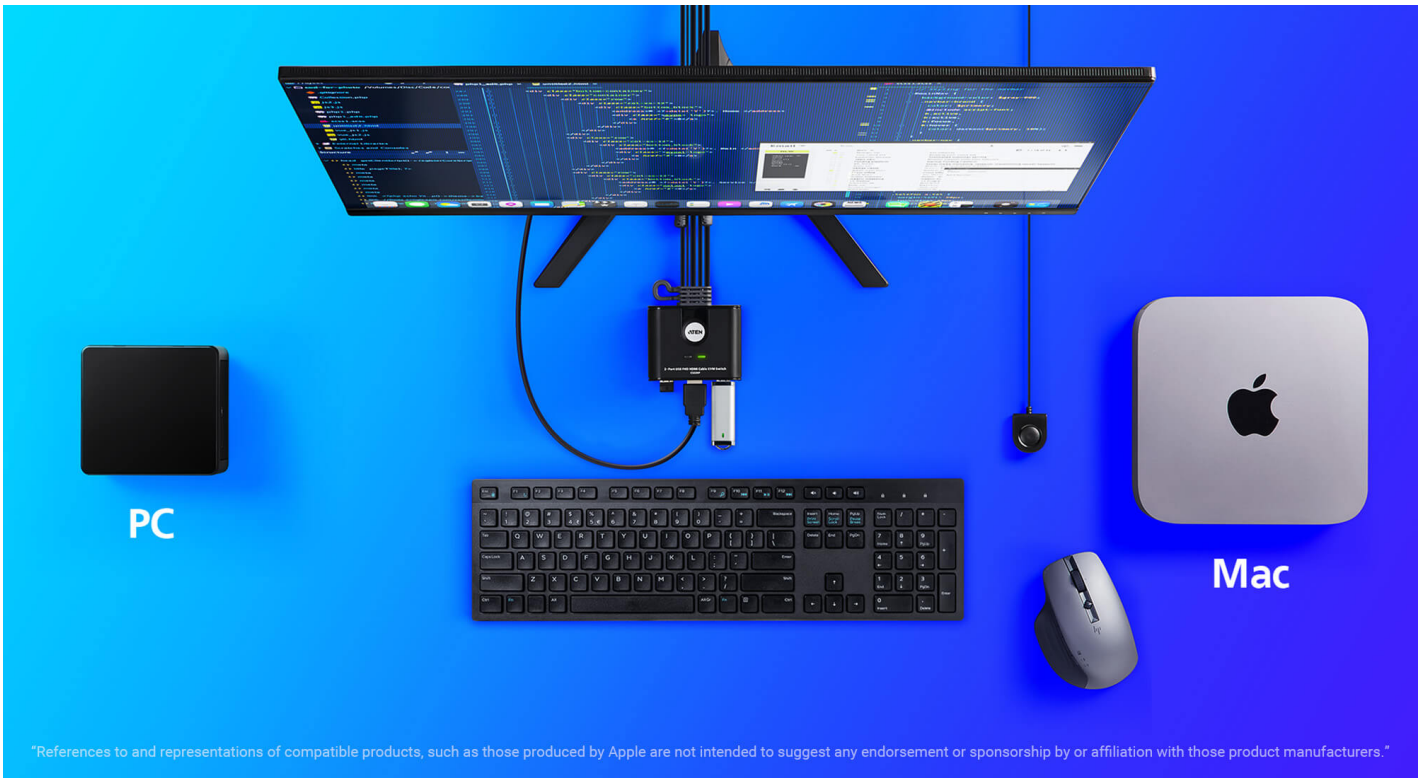
Supercharge your productivity with the compact **CS22HF HDMI Cable KVM Switch**, and get started with multitasking across different platforms. With one set of keyboard, mouse and monitor, one click is all it takes to take control of either of your computers and enjoy stunning Full HD resolution for crisp, clear visuals for any desktop task. Installation is as easy as plug-n-play connections via USB and HDMI, and the CS22HF's patented all-in-one design (cables + KVM) further transforms your desk into a neat and tidy workspace that you can immerse in all day long with comfort.

Reclaim desk space, boost productivity, and experience the freedom of a multi-computer workspace – all thanks to the **CS22HF**.



Cross-platform Access via One KVM Console

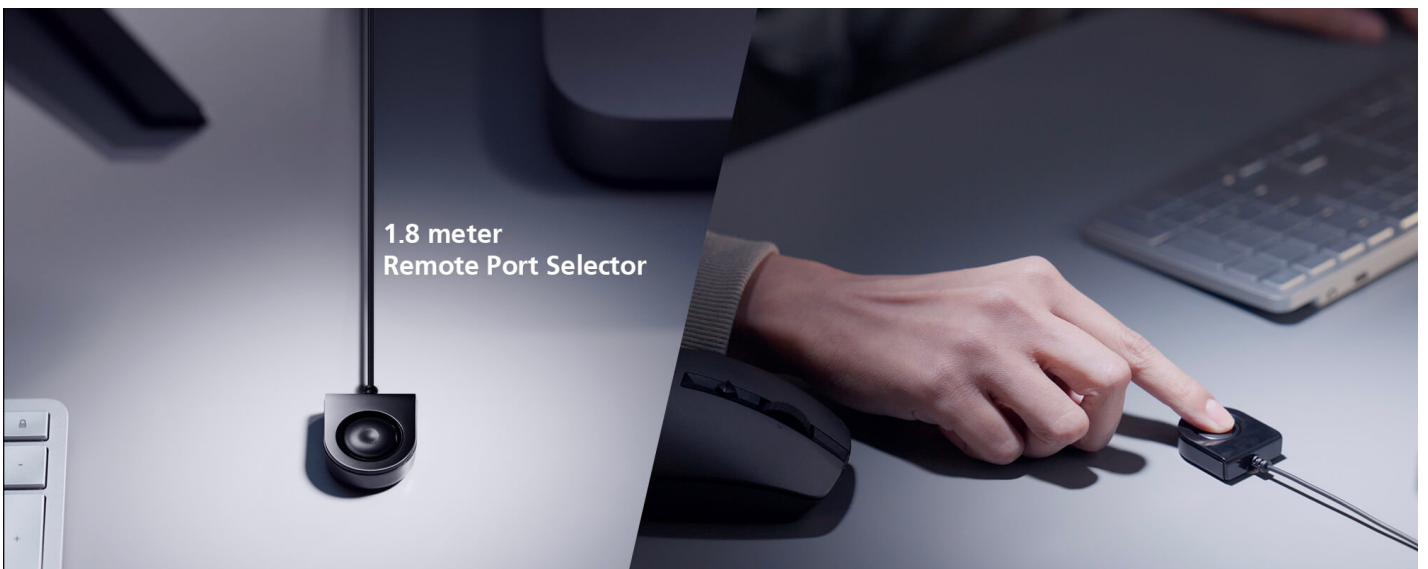
The setup of CS22HF allows instant access across 2 computer platforms (e.g. Windows, MacOS, Linux, etc.) via one KVM console (i.e. one set of keyboard/mouse/monitor).



"References to and representations of compatible products, such as those produced by Apple are not intended to suggest any endorsement or sponsorship by or affiliation with those product manufacturers."

Switch as Quick as One Touch

The 1.8-meter remote port selector can be flexibly located, allowing quick and straightforward switching between 2 computers from anywhere on the desktop.



Plug-n-Play Peripheral Sharing

The console USB ports can be used for plug-n-play connection to compatible USB 2.0 peripheral devices to fulfill data-intensive desktop work requirements.



Keyboard / Mouse

Hub

Camera

Card Reader
Flash Drive

**Plug in. Power on**

The CS22HF supports USB hot-plugging and is bus-powered by the connected KVM sources via USB ports.

Easy Hook for Workspace Efficiency

The compact, easy-hook design allows you to handily locate your CS22HF out of the way, such as under the desk, helping to clear space on your desktop for improved productivity.



Contact Us

Get a quote for this product or get in touch with our sales experts

[Get Quote](#)

[Contact Sales](#)

Deck out Your Desktop with Simplicity

The compact, portable CS22HF boasts a patented all-in-one design that simplifies your desktop setup with flexibility, making it a handy solution for optimal convenience.



Applications

The CS22HF Cable KVM Switch facilitates a simplified and productive work style, empowering smooth switching between two computer systems for either work or entertainment in dynamic work environments.



Graphics Design / Video Editing



Office Desktop



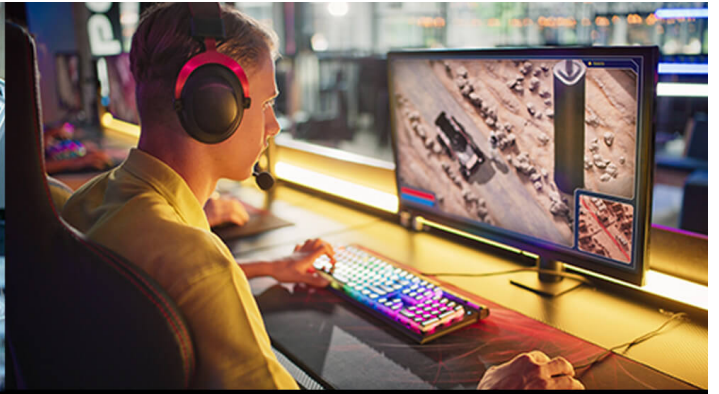
Work from Home



Network Separation



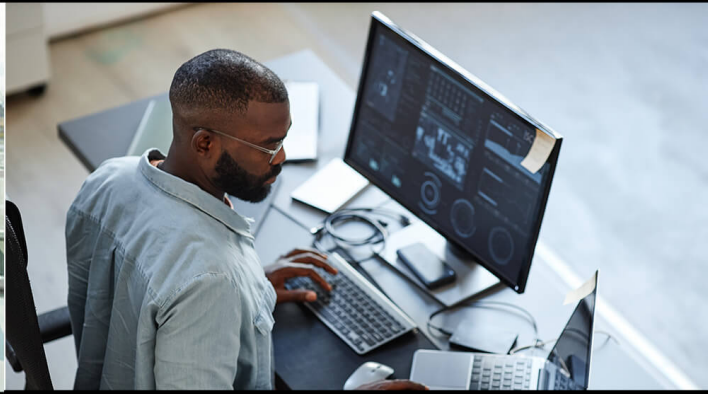
Engineering Lab



Entertainment



Health Admin



IT Office

[Product Comparison](#)

[Talk to Our Experts](#)

If you prefer to have ATEN contact you, please complete the form and a representative will be in touch with you shortly



Features

The CS22HF 2-Port USB FHD HDMI Cable KVM Switch is a control unit that allows access to two computers from a single USB and HDMI console while offering video quality up to 1920 x 1080 @ 60 Hz / 1920 x 1200 @ 60 Hz. With the CS22HF, you can quickly and effortlessly switch between two USB HDMI computers via the pushbutton on the remote port selector. The CS22HF supports multiplatform operations which allow you to switch between two different operating system PCs.

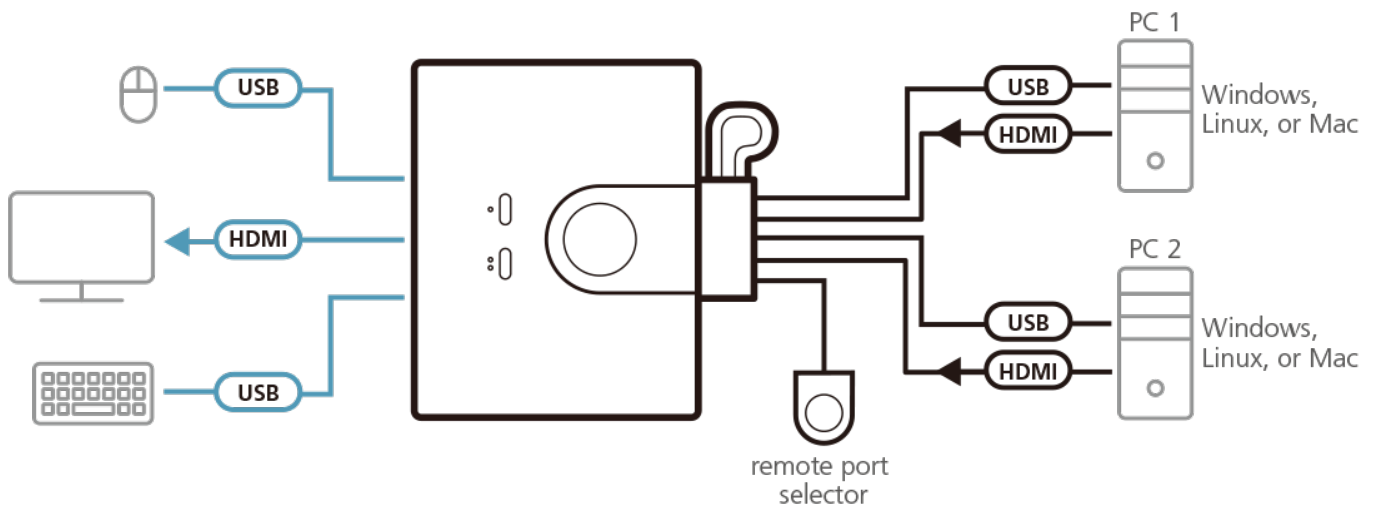
Moreover, the compact and bus-powered design allows for an efficient and tidy installation, providing an ideal spacesaving solution to keep your desk well-organized. This plug and play switch is ideal for people who need quick control to multitask between two computers on a desktop in any environment.

- One KVM console controls two computers with USB and HDMI interface
- Superior video quality – up to 1920 x 1080 @ 60 Hz / 1920 x 1200 @ 60 Hz
- Computer selection via Remote Port Selector
- HDMI compliant; HDCP 1.4 compliant
- Multiplatform support – Windows, Mac, and Linux
- The console USB ports can be used for USB peripheral sharing
- Supports USB hot-plugging
- Bus-powered

Specifications

Computer Connections	2
Port Selection	Remote Port Selector
Connectors	
Console Ports	1 x HDMI Female 2 x USB Type A Female
KVM Ports	2 x HDMI Male 2 x USB Type A Male
LEDs	
Selected	2 (Green)
Cable Length	
Computer	2 x 1.2 m
Remote Port Selector	1.8 m
Video	1920 x 1080 @ 60 Hz; 1920 X 1200 @ 60Hz
Power Consumption	DC5V:1.518W:11BTU/h Note: ● The measurement in Watts indicates the typical power consumption of the device with no external loading. ● The measurement in BTU/h indicates the power consumption of the device when it is fully loaded.
Environmental	
Operating Temperature	0-50°C
Storage Temperature	-20-60°C
Humidity	0-80% RH, Non-condensing
Physical Properties	
Housing	Plastic
Weight	0.26 kg (0.57 lb)
Dimensions (L x W x H)	8.24 x 6.65 x 2.52 cm (3.24 x 2.62 x 0.99 in.)
Note	For some of rack mount products, please note that the standard physical dimensions of WxDxH are expressed using a LxWxH format.

Diagram





Simply Better Connections

ATEN International Co., Ltd.

3F., No.125, Sec. 2, Datong Rd., Sijhih District., New Taipei City 221, Taiwan
Phone: 886-2-8692-6789 Fax: 886-2-8692-6767
www.aten.com E-mail: marketing@aten.com



© Copyright 2015 ATEN® International Co., Ltd.
ATEN and the ATEN logo are trademarks of ATEN International Co., Ltd.
All rights reserved. All other trademarks are the property of their
respective owners.