

## VK6000

ATEN Control System - Configurator Software



The ATEN Configurator Software (VK6000) is a GUI-based management tool that provides the easiest way to set up the [ATEN Control System](#). You can use the software to configure devices you want to control by utilizing our intuitive GUI, which helps you to set up the system in easy configuration steps – without writing code.

The software allows you to create a custom control interface simply by dragging and dropping default images and icons onto pages. Plus, you can upload images and icons to design a personalized user interface – from the colors, to buttons and backgrounds, to a company's logo, there is no limit. The VK6000 also has a built-in ATEN Library with 10,000+ device drivers and all the ATEN ProAV product drivers so that you can seamlessly integrate any hardware device from any major brands in no time.

### Features

- Simple profile setup with easy configuration steps via intuitive GUI
- Customizable GUI to be used on mobile devices and PC
- Supports [ControlAssist](#) that allows PC control (PC shutdown, media files, PowerPoint files) <sup>1</sup>
- Supports Pronto formatted IR codes – IR command codes can be entered in Hex format
- Supports Modbus protocol – enables integration with Modbus devices, including TCP, RTU and its checksum data
- Supports Telnet CLI (command-line interface) mode for third-party system integration
- Built-in [Database Generator](#) for device driver setup and overall device management
- Built-in ATEN Library comprising 10,000+ device drivers and complete ATEN ProAV product drivers
- Scheduling for repeating events
- Programming-based Script Editor for complex monitoring scenario handling
- Two-way communication enables user-defined event monitoring to automatically trigger the next actions
- Status synchronization of managed devices across multiple mobile devices
- Supports status monitoring and action control configurations of third devices implemented on [ATEN Unizon](#).<sup>2</sup>
- Allows for Display Real-time Streaming Protocol (RTSP) and ATEN [VE89 series](#) video
- Test tool to verify commands in action before uploading the profile to the VK series controllers
- Simulator to simulate and review the customized GUI before uploading

Note:

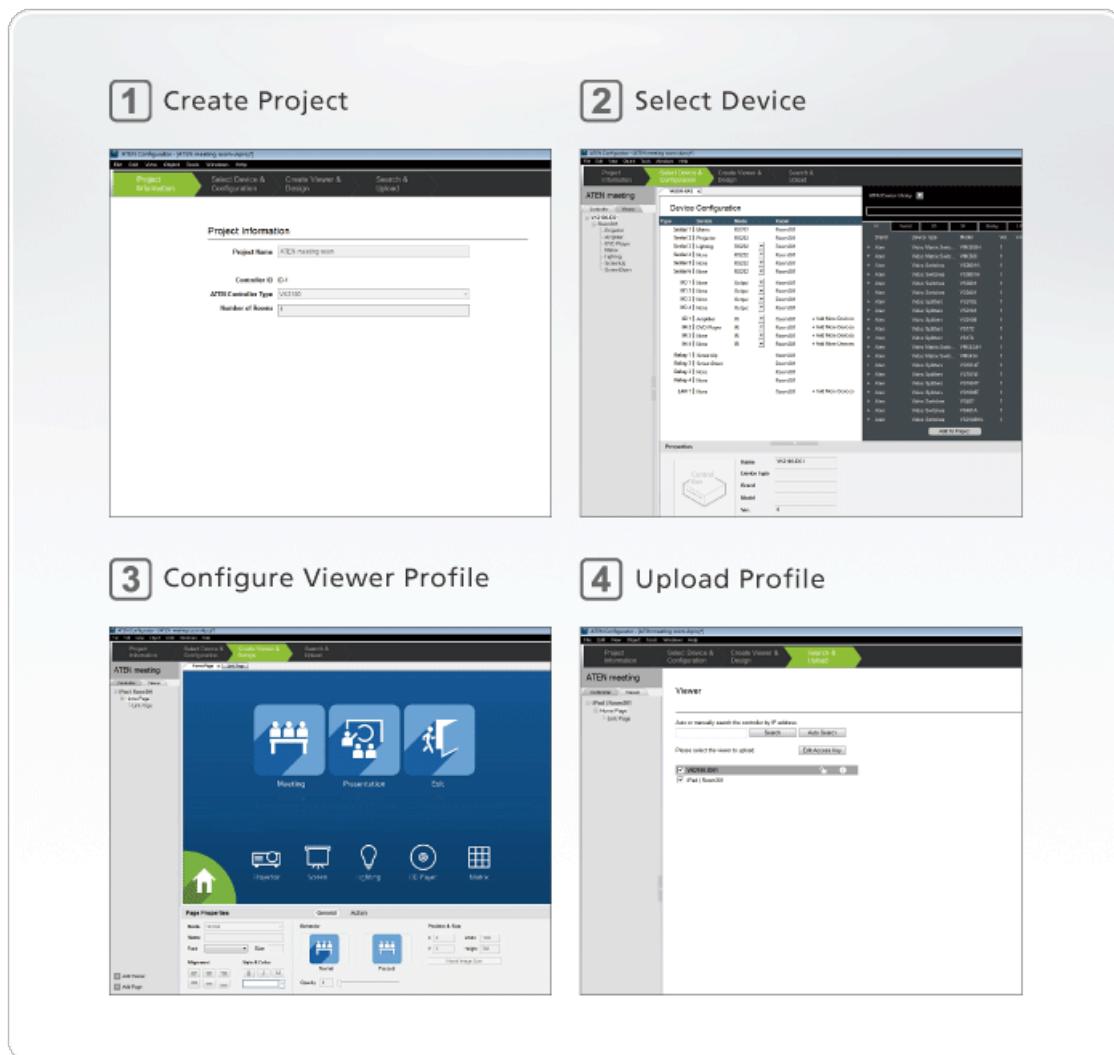
1. For details on the supported PC control actions, refer to the [ATEN Control System](#) User Manual.

2. The function is applicable to [VK2200](#) / [VK1200](#).

**Specifications**

Processor	1GHz
OS Support	Windows 7(32/64 bit) and above
Storage Capacity	500MB available hard disk space
System Memory	1GB

**Diagram**



**ATEN International Co., Ltd.**

3F, No.125, Sec. 2, Datong Rd., Sijhih District., New Taipei City 221, Taiwan  
 Phone: 886-2-8692-6789 Fax: 886-2-8692-6767  
 www.aten.com E-mail: marketing@aten.com



© Copyright 2015 ATEN® International Co., Ltd.  
 ATEN and the ATEN logo are trademarks of ATEN International Co., Ltd.  
 All rights reserved. All other trademarks are the property of their  
 respective owners.