

## CN800

USB VGA KVM over IP Mini



**Simple, Secure, and Sustainable Remote Management**  
*KVM over IP Agility..0U Rackspace Efficiency.*

Network

**CN800**  
**USB VGA KVM over IP Mini**

As digital infrastructure expands across cloud, edge, and on-premise environments, resilience and agility have become operational priorities. Secure, out-of-band remote access is no longer just an IT convenience – it’s a strategic capability that reduces downtime, safeguards continuity, and enables teams to manage critical systems from anywhere.

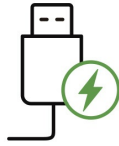
To address this need, the CN800, a compact 0U, hardware-based KVM over IP solution, delivers secure, always-available, BIOS-level remote access to a single server or computer – without the need for software installation. Using standard TCP/IP communication over a Cat 5e/6 connection, it provides full, secure control of the connected system via WinClient and JavaClient across an intranet or remotely from anywhere.

With native VGA support – still the most common display interface in server hardware – the CN800 ensures broad compatibility and reliable [remote management](#), all without adding rack overhead

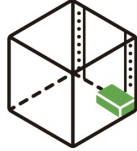
or operational complexity.



BIOS-Level Access



Bus-Powered



0U Form Factor



Multi-platform Support

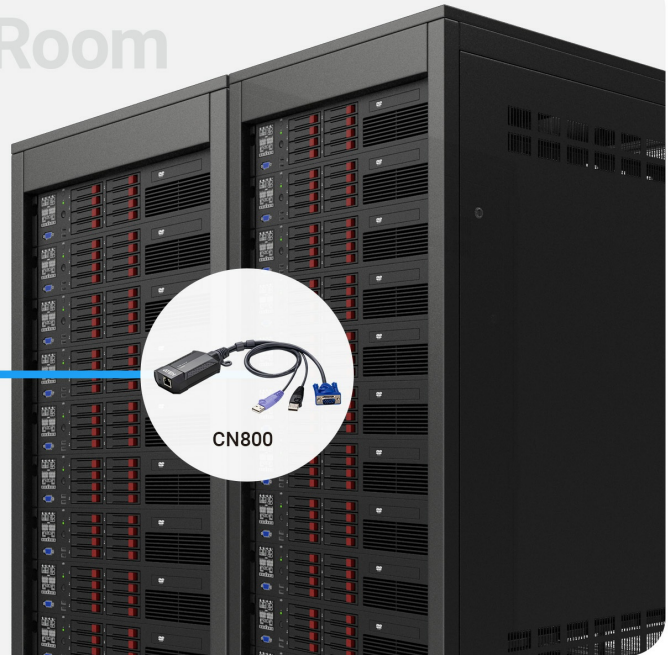
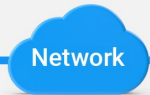


Virtual Media

## Remote Site



## Server Room



CN800

### BIOS-Level KVM over IP Solution

The CN800 KVM over IP Mini empowers administrators with full remote control and BIOS-level access to the connected server or computer. Transmitting only keyboard, video, and mouse signals, this secure, hardware-based solution functions as a virtual remote desktop without exposing the system to software-level vulnerabilities.

### Easy Hook for Workspace Efficiency

The CN800 blends perfectly into any workspace environment (e.g., under the desk) with its compact, easy-hook design, de-cluttering desktop space for improved productivity. This makes it ideal for any office or work-from-home setup.



**Superior Video Performance**

The CN800 supports VGA input resolutions up to 1920 x 1200 @ 60 Hz with 24-bit color depth, ensuring clear, responsive video content for every remote session.

**Industry-Standard Security with Virtual Media**

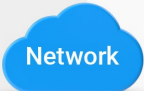
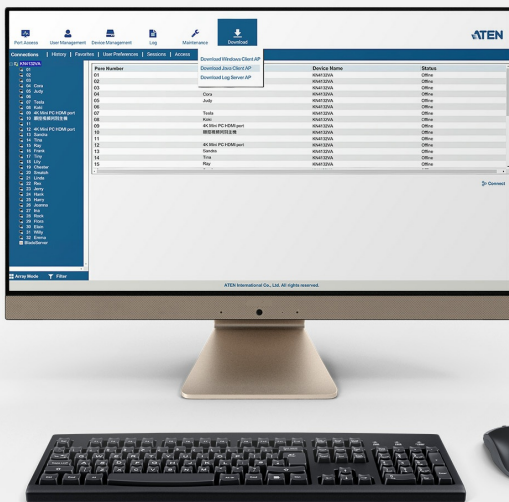
Remote operations are protected by TLS 1.2 and 256-bit AES data encryption, ensuring that [virtual media](#) functions, such as firmware upgrades, diagnostics, and software patching, remain as secure and reliable as if performed locally, maintaining total data integrity.



# Remote

WinClient or JavaClient

Windows, macOS X, Linux, Sun



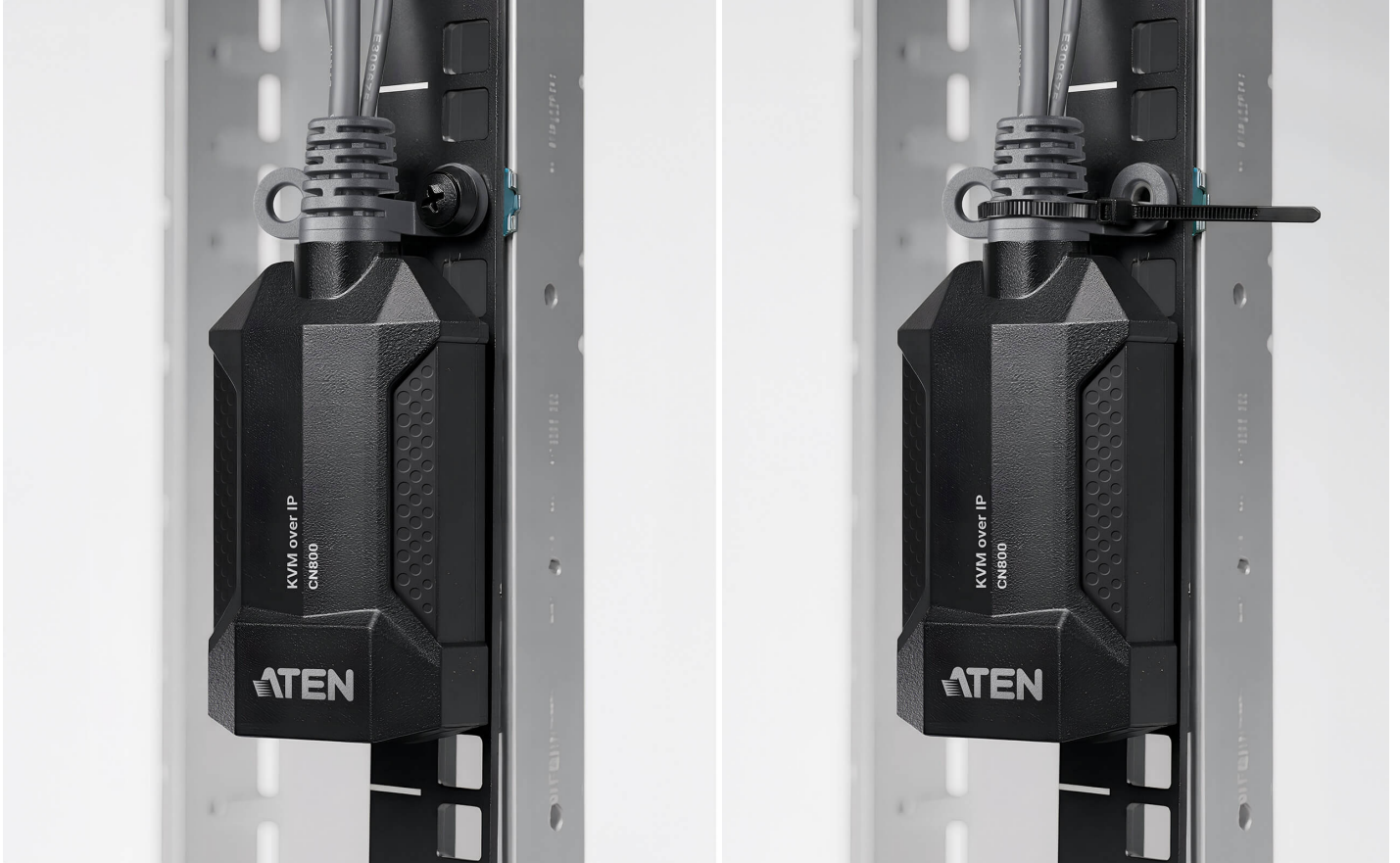
# Server

**Multi-platform Support**

Using standard TCP/IP communication over a Cat 5e/6 connection, the CN800 provides full and secure control of the connected system – whether Windows, macOS X, Linux, or Sun – through WinClient or JavaClient, either across an intranet or remotely from anywhere.

**Compact, 0U Housing, Lightweight**

With its compact, lightweight 0U design (weighing only 170 grams) and a unique hook for easy rack placement – whether fastened with a cable tie or secured using a cage nut – the CN800 delivers reliable server management with flexible, space-efficient deployment, ideal for modern [data centers](#) and mobile IT environments.



**Applications**

With secure remote access at its core, the CN800 is ideal for IT administrators and professionals seeking an effective, efficient solution for server management across [data centers](#), production lines, or remote work environments.



**Server Room**

**Production Line**

**Work from Home**

**Talk to Our Experts**

If you prefer to have ATEN contact you, please complete the form and a representative will be in touch with you shortly

First Name \*

Last Name \*

- Country \*

Company \*

Email \*

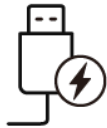
Phone Number \*

- Customer Type \*

Job Title \*



BIOS-Level Access



Bus-Powered



0U Form Factor



Multi-platform Support



Virtual Media

## Features

The ATEN CN800 offers superior video quality with HD resolutions up to 1920 x 1200 @ 60 Hz, facilitating easier KVM access. The CN800 USB VGA KVM over IP Mini provides "over-IP" access control for conventional KVM switches lacking built-in over-IP functionality. It enables system operators to monitor and access computers remotely using Windows and Java-based application programs. The CN800 connects to an intranet, either LAN or WAN simply by using an industry-standard Cat 5e/6 cable and to a target computer or server. WinClient and JavaClient are available for remote access, enabling IP connection and login from anywhere over the internet.

The ATEN CN800 uses the standard TCP/IP protocols for communication. It allows the connected server or computer to be accessed from any computer over the internet – whether that computer is located down the hall, in other areas of the country, or branch offices in other parts of the world. The CN800 provides a fast, reliable, and cost-effective way to remotely access and manage widely distributed multiple computer installations.

### • Hardware

- Provides over-IP capability to KVM switches that do not have built in over-IP functionality
- Supports multi-platform server environments: Windows, Mac, Sun, Linux and VT100 based serial devices
- Virtual Media Support
- High video resolution – up to 1920 x 1200 @ 60 Hz with 24 bit color depth for remote sessions
- Enhanced FPS (frames per second) throughput for crisp responsive video display
- Bus-powered – no external power adapter required

### • Management

- Up to 64 user accounts
- Up to 32 users concurrent logins
- End session feature – administrators can terminate running sessions
- Event logging and Windows-based Log Server support
- Supports instant notification of critical system events via email, SNMP trap, and Syslog
- Remote firmware upgradable
- Multi-user Mode allows multiple users to gain access to a server simultaneously
- Integration with ATEN [CC2000](#) Centralized Management Software
- Integration with ATEN [CCVSR](#) Video Session Recording Software
- DDNS (Dynamic Domain Name System)
- Enable / disable browser operation
- IPv6 capable

### • Easy-to-Use Interface

- Browser-based and AP GUIs offer a unified multi-language interface to minimize user training time and increase productivity
- Multi-platform client support (Windows, Mac OS X, Linux, Sun)
- Multi-browser supports (Chrome, Firefox, Safari, Opera)
- Browser-based UI in pure Web technology allows administrators to perform administrative tasks without pre-installed Java software package required
- Full-screen or sizable and scalable Virtual Remote Desktop

### • Advanced Security

- External authentication supports: RADIUS, LDAP, LDAPS, and MS Active Directory
- TLS 1.2 encryption to protect password when users log in
- Flexible design allows users to choose any combination of encryption algorithms (e.g. 256-bit AES) or systemgenerated random selection for independent keyboard / mouse, video, and [virtual media](#) data encryption
- Supports for IP / MAC Filter
- Supports password protection
- Private CA

### • Virtual Media

- Virtual media enables file applications, OS patching, software installation and diagnostic testing
- Works with USB enabled servers in operating system and BIOS level
- Supports USB 2.0 DVD / CD drives, USB mass storage devices, PC hard drives and ISO images
- Convenient to use without [virtual media](#) cable

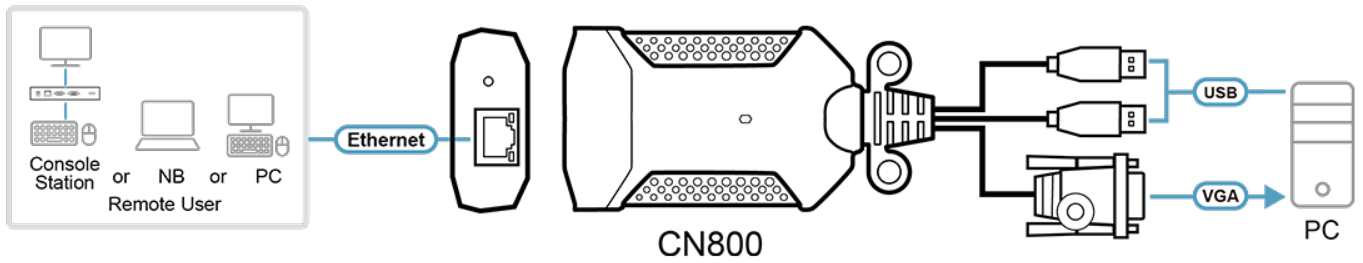
### • Virtual Remote Desktop

- Video quality and video tolerance can be adjusted to optimize data transfer speed; monochrome color depth setting, threshold and noise settings for compression of the data bandwidth in low bandwidth situations
- Full screen video display or scalable video display
- Message Board for communication among remote users
- On-screen keyboard with multi-language support
- Mouse Dynasync
- Exit Macros support
- BIOS-level access

**Specifications**

Connectors	
KVM (Computer) Ports	1 x USB Type A Male (Purple) 1 x USB Type A Male (Black) 1 x VGA Male (Blue)
LAN Ports	1 x RJ-45 Female
Switches	
Reset	1 x Semi-recessed Pushbutton
LEDs	
Power	1 (Green)
Link	1 x Link (Orange / Green) 1 x Active (Green)
Emulation	
Keyboard / Mouse	USB
Video	1920 x 1200
Power Consumption	DC5V:3.47W:16BTU/h  Note: ● The measurement in Watts indicates the typical power consumption of the device with no external loading. ● The measurement in BTU/h indicates the power consumption of the device when it is fully loaded.
Environmental	
Operating Temperature	0 - 50°C
Storage Temperature	-20 - 60°C
Humidity	0 - 80% RH, Non-condensing
Physical Properties	
Housing	Plastic
Weight	0.17 kg ( 0.37 lb )
Dimensions (L x W x H)	9.32 x 5.66 x 2.44 cm (3.67 x 2.23 x 0.96 in.)
Note	For some of rack mount products, please note that the standard physical dimensions of WxDxH are expressed using a LxWxH format.

Diagram



**ATEN International Co., Ltd.**

3F., No.125, Sec. 2, Datong Rd., Sijhih District., New Taipei City 221, Taiwan  
Phone: 886-2-8692-6789 Fax: 886-2-8692-6767  
www.aten.com E-mail: marketing@aten.com



© Copyright 2015 ATEN® International Co., Ltd.  
ATEN and the ATEN logo are trademarks of ATEN International Co., Ltd.  
All rights reserved. All other trademarks are the property of their respective owners.