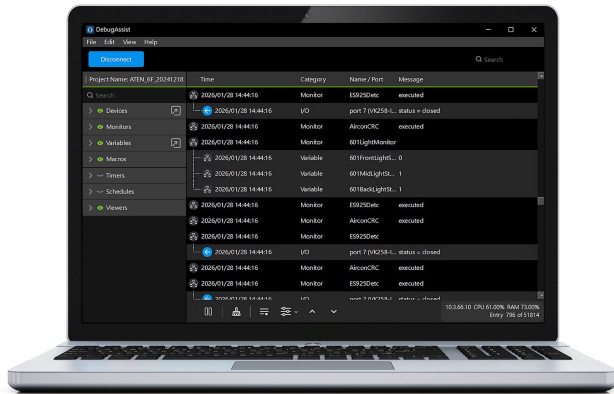


## DebugAssist

ATEN Control System – Debug Tool



A tool designed to help users troubleshoot, verify and monitor [ATEN Control System](#) projects with ease. By providing valuable functions, including log filtering, device connection testing, simulation, and more, it serves as a convenient companion to the ATEN system, helping clarify issues more efficiently.

### Features

- A tool designed to assist users in troubleshooting, verifying and monitoring the status of [ATEN control system](#)
- Filter log messages by showing or hiding the specific events
- Commands can be sent directly to defined interfaces to verify connections between devices
- Simulates controlled devices by sending messages or commands to controllers
- Allows users to modify variable values in real-time
- Integration with Windows viewer to enable UI interaction
- Supports keyword detection and tracking
- Supports Windows and macOS systems
- Monitors controller health status, including CPU and RAM usage
- Exports and imports log files

### **ATEN International Co., Ltd.**

3F., No.125, Sec. 2, Datong Rd., Sijhih District., New Taipei City 221, Taiwan  
 Phone: 886-2-8692-6789 Fax: 886-2-8692-6767  
 www.aten.com E-mail: marketing@aten.com



© Copyright 2015 ATEN® International Co., Ltd.  
 ATEN and the ATEN logo are trademarks of ATEN International Co., Ltd.  
 All rights reserved. All other trademarks are the property of their respective owners.