

KG9950T

USB 4K DisplayPort KVM DigiProcessor



All-Digital KVM over IP Server Room Management Solution

Speedy & Uninterrupted Server Uptime with Crystal-Clear Visualization

Advanced Noise Immunity for Superior Digital Signal Transmission



4K

DP
HDMI



DigiProcessor with 0U Housing

DigiKVM™

All-Digital KVM over IP OmniBus Gateway

2x Longer
Server Cabling Connection (up to 100m)

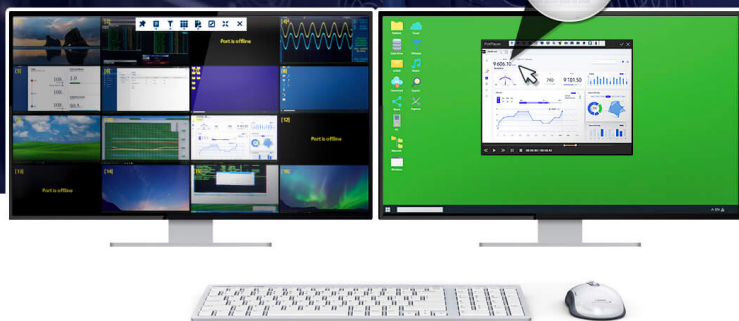
10x Faster
Virtual Media Data Transfer Rate

100x Greater
Livestreamed Video Refresh Rate

Panel Array Mode Live+ with Livestreamed Video

9 606.10
Analytics

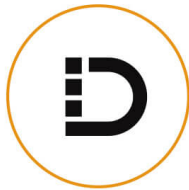
Crystal-Clear Video



Sustainability is pivotal in modern business, with IT/OT convergence at the forefront of innovation. This union not only heightens competitiveness but also enhances responsiveness to market demands, particularly concerning data security and network uptime. With the rise of digitalization in industry, cybersecurity's role in bolstering IT-OT synergy is crucial.

The DigiKVM™ – [KG0016/KG0032](#) exemplifies this digital shift. This all-digital KVM over IP OmniBus Gateway champions digital transformation in spaces like server rooms and data centers. Through a secure portal, it offers centralized management and real-time remote server access. Regardless of the data signal type from the linked KVM DigiProcessor, all transmissions are digitized and protected, ensuring fast, clear video monitoring with remarkable visual accuracy.

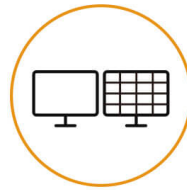
The all-digital KVM over IP solution stands out for its robust security and versatile OS compatibility. It also presents a reliable way to manage remote IT access with out-of-band (OOBM) connection, especially when the in-band connectivity is compromised. For geographically spread businesses, it's a boon, enabling IT to quickly reinstate services and minimize business downtime.



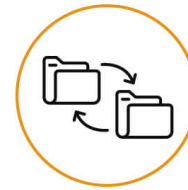
All-digital KVM over IP



Video Clarity



100x Livestreamed Video Refresh Rate



10x Virtual Media Data Transfer Rate



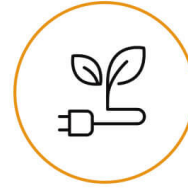
2x / 100m Server Cabling Connection



HTML5 WebClient



TLS 1.3/FIPS 140-3 Encryption



Low Power Consumption

ISO/IEC 27002:2022 Compliance. BIOS-Level Remote Security

The KVM over IP OmniBus Gateway provides a secure, hardware-based KVM over IP solution with direct, hack-proof BIOS-level control. Unlike software tools such as VNC or RDP, it eliminates OS-level vulnerabilities while ensuring compliance with ISO/IEC 27002:2022 Control 6.7 on Remote Working – safeguarding the confidentiality, integrity, and availability of sensitive data, processes, and systems in mission-critical environments. (Discover the KG Series in action with [EVA Air's success story](#))



ISO 27002:2022 Control 6.7

Remote Working Compliance

BIOS-Level KVM Access (Hardware-based Solution)

KG0032 / KG0016

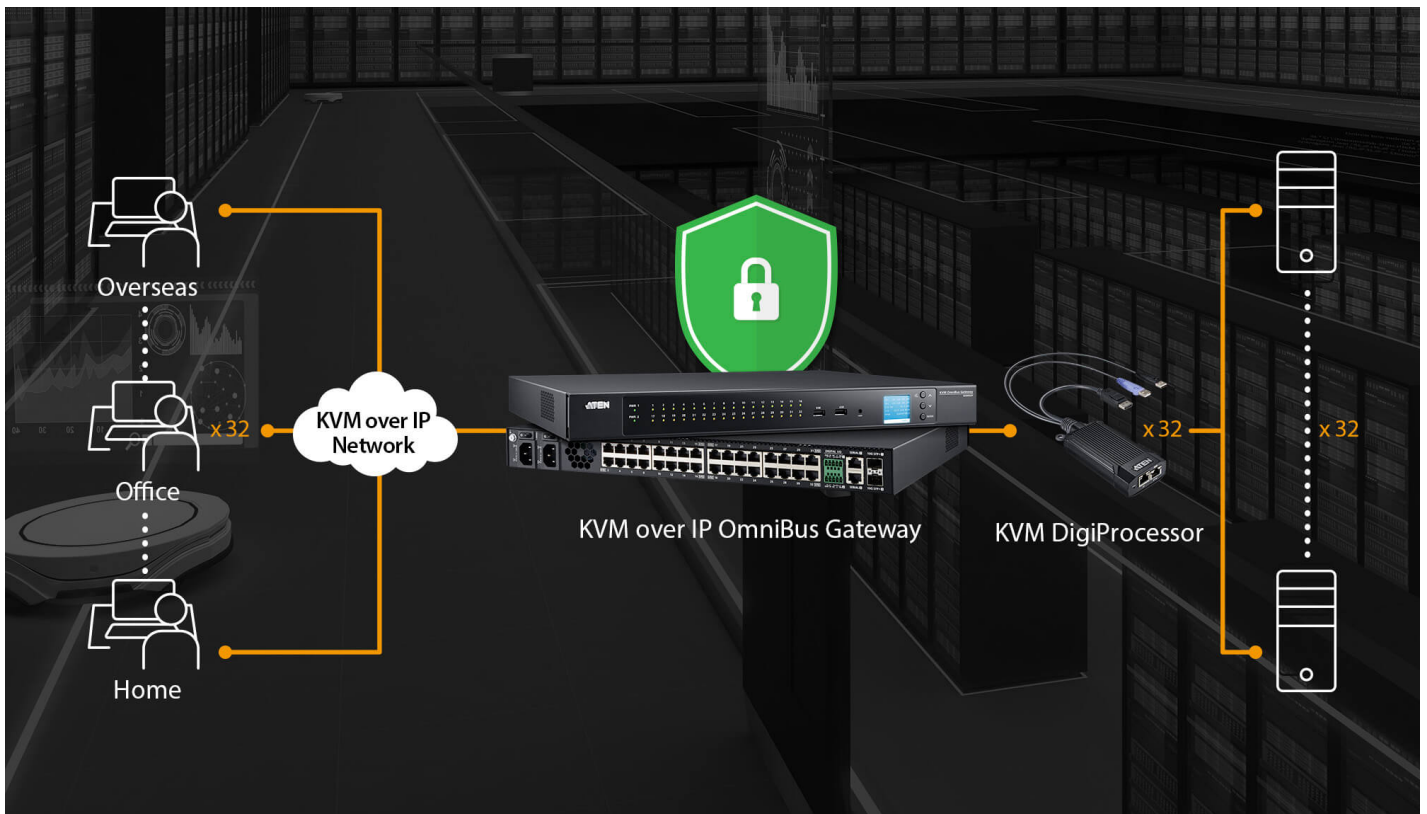
Industry-First FIPS 140-3 Secured All-Digital KVM over IP Transmission

The KVM over IP OmniBus Gateway, operating within a closed system, provides a single secure portal to centralize BIOS-level connections to PCs and servers – without requiring additional software installation or configuration. As the industry's first all-digital KVM over IP solution to implement FIPS 140-3 and TLS 1.3 encryption, it safeguards data transmission and ensures secure access to all remote servers via a Java-free HTML5 WebClient Viewer or a WinClient Viewer.



Real-time and Concurrent Remote Access, Anywhere and Anytime

The All-digital KVM over IP OmniBus Gateway allows real-time, up to 32 concurrent remote user access to any connected servers regardless where and when the login takes place. Server connection can be extended up to 100m away, delivering extraordinary 4K visual clarity and agile user experience with smooth keyboard-video-mouse synchronization.



With the deployment of the KVM over IP OmniBus Gateway and the KVM DigiProcessor, equipment data collected in the production line can be monitored and processed in real time via a remote console, preventing the need to constantly enter the production line or clean room for operations. This approach facilitates manufacturing digitalization via setting up a digital twin model to streamline and optimize production line processes.



Out-of-Band Management for Any Contingency

With the management network and production network separated, the KVM over IP OmniBus Gateway connected to the management network allows the IT operator to perform timely troubleshooting (e.g. software patches, image updates, reboots, etc.) and system maintenance over the servers via BIOS during the downtime of the production network. This approach can serve as an emergency measure in contingencies while keeping data and workflow secure from end to end.



Panel Array Mode™ Live+ for Multi-View Monitoring in Clarity

Real-time monitoring is effortless with Panel Array Mode™ Live+ where content of a dedicated server is displayed in 24-bit true color and up to 3840 x 2160 @ 30Hz in a control-view window, while the video from all servers is presented in a multi-view grid layout which is variable as needed (up to 4x4 with [KG0016](#) or 4x8 with [KG0032](#)). The video feed in both the control and array views is livestreamed in extraordinary smoothness for optimized situational awareness.

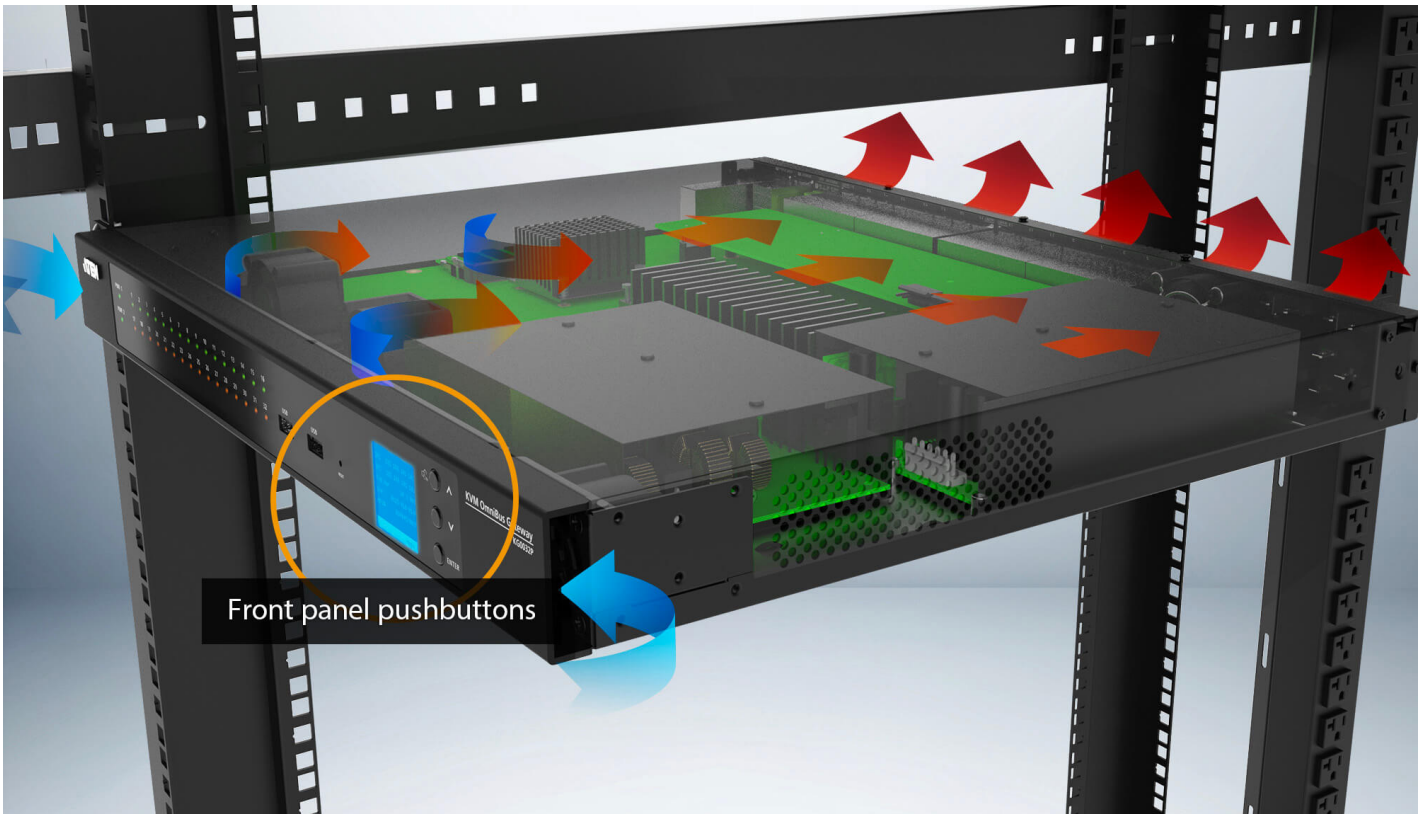
Virtual Media Support for Prompt Server Updates

Mapping media to a remote server as though it were saved locally does the trick for timely troubleshooting, reducing travel cost and minimizing MTTR (Mean Time to Repair). With a superb data transfer rate (i.e. Read: 265 Mbps, Write: 188 Mbps) proven to be 10 times faster than standard KVM over IP switches, performing firmware upgrades, diagnostic tests, file transfers, and installing software and application patches can all be accomplished smoothly and quickly from a single console located anywhere.



Superior Hardware Performance to Reinforce System Reliability and Usability

The KVM over IP OmniBus Gateway is built with 4x server-grade smart fan modules, facilitating all-around airflow efficiency for strengthened system reliability. When the system is idle or under light workload, the fan then runs in a low hum under 40 dBA. In addition, the front panel pushbuttons can be used to perform timely troubleshooting with prompt device configuration and system reboot in contingencies, and also locked to secure system settings from unauthorized access.



Industry's Most Compact KVM DigiProcessor to Maximize Rack Space Efficiency

The KVM DigiProcessor, available in VGA, DVI, HDMI and DisplayPort connectivity, is 25% lighter in weight and 1/4 the size of comparable products for optimized in-rack server connections. The anti-bending SR hanger allows for flexible yet stable in-rack installation, while the indented groove on both sides is intended to prevent the device from falling loose when tied onto the rack. In addition, the heat radiating fins are purposed to boost airflow efficiency to ensure system reliability.



Applications

The All-Digital KVM over IP solution facilitates seamless IT/OT convergence with comprehensive server management, and is perfectly suited to various industrial applications that are accelerating towards digital transformation.

**IT Infrastructure Management**

- BIOS level access
- Superb Virtual Media read/write data transfer rate
- TLS 1.3 & FIPS140-3 encryption

Information Visualization

- Up to 32 concurrent remote user access to any connected server
- Real-time remote monitoring and control
- Panel Array Mode Live+ with livestreamed video feed



Production Automation

- Delay-free Remote Control
- Real-time remote monitoring and equipment access
- Panel Array Mode Live+ with livestreamed visuals from production line equipment

Remote Monitoring & Control

- Up to 32 concurrent remote user access to any connected server
- Panel Array Mode Live+ with livestreamed video feed
- Superb Virtual Media read/write data transfer rate



Product Comparison

Talk to Our Experts

If you prefer to have ATEN contact you, please complete the form and a representative will be in touch with you shortly



Features

The KG9950T USB 4K DisplayPort KVM DigiProcessor can centrally connect from the KVM over IP OmniBus Gateway to the target computer. Its digital signal delivers superior signal compensation for greatly enhanced video quality up to 3840 x 2160 @30 Hz, 24-bit color depth and raises the data transfer rate faster than traditional KVM solutions. This plug and play KVM DigiProcessor is built with a powerful SoC that provides excellent video compression performance. Its zero-U and light weight design allows for an efficient and tidy installation, providing an ideal space-saving solution. The KVM DigiProcessor is perfectly suited to data center, server room, control room and high tech production line applications.

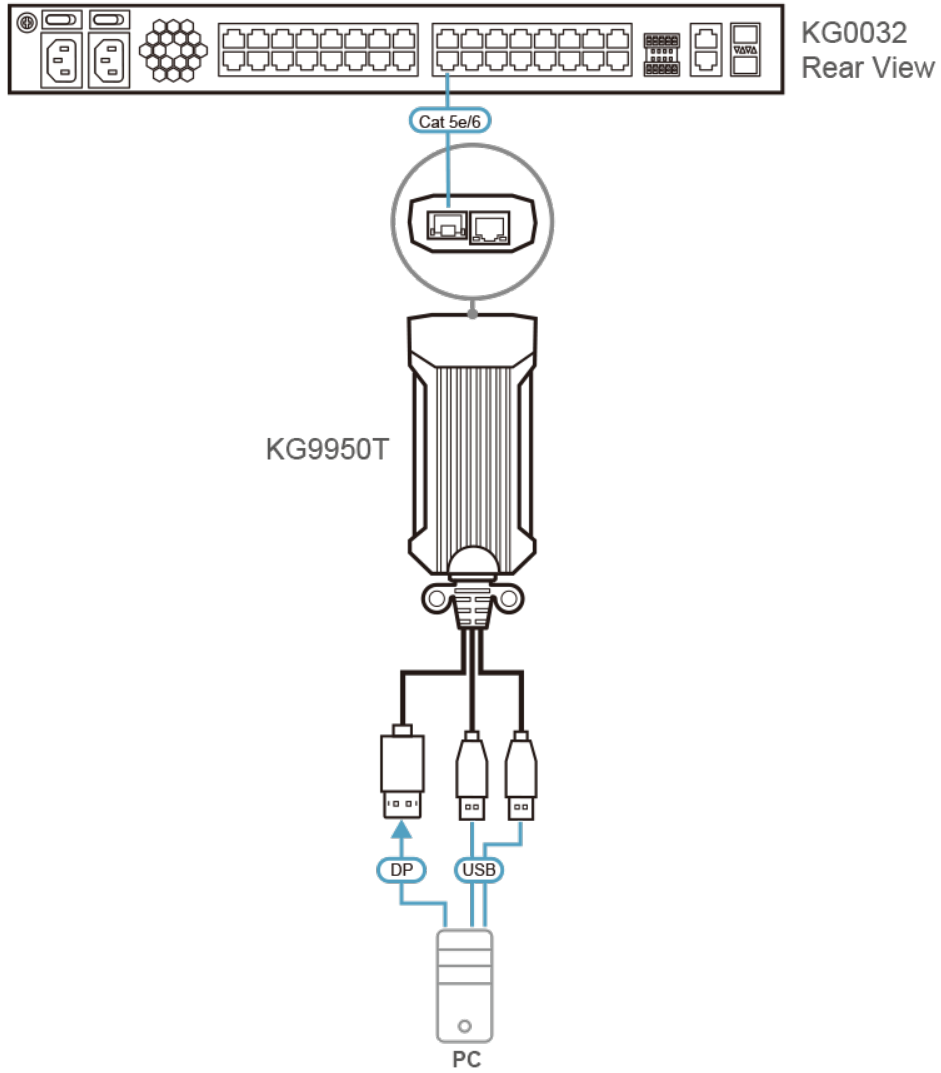
Note: The ATEN KVM DigiProcessor is only compatible with [KG0016](#) / [KG0032](#). Make sure the [KG0016](#) / [KG0032](#) and the KVM DigiProcessor are connected directly with each other and there is no network switch in between. The SP port on the ATEN DigiProcessor is reserved for future expansion.

- Superior video quality – supports resolutions up to 3840 x 2160 @30 Hz; 24-bit color depth
- Distortion-free dynamic video performance up to 100m via a Cat 5e/6 cable
- Virtual Media supports fast transmission speeds up to Read 265Mbps / Write 188Mbps
- Space saving – 0U and compact design with SR mounting hanger for organized server rack installation
- Light-weight aluminum die casting shroud – enhanced passive cooling design with streamlining stripe all around the shroud to help quick radiation
- Bus-powered – no external power adapter required with ultra-low power consumption
- Firmware upgradable
- Smart Card / CAC reader support
- DisplayPort digital audio support

Specification

Connectors	
Link	1 x RJ-45 Female (KVM) 1 x RJ-45 Female (SP) (Reserved for future expansion)
Computer	2 x USB Type A Male 1 x DisplayPort Male
Switches	
Reset	1 x Semi-recessed Pushbutton
LEDs	
Link	1 (Green)- On: Active / Blinking: Transmit/Receive)
10/100/1000 Mbps	1 (Off / Orange / Green)
Power	1 (Green)
Power Consumption	DC5V:3.83W:18BTU/h Note: ● The measurement in Watts indicates the typical power consumption of the device with no external loading. ● The measurement in BTU/h indicates the power consumption of the device when it is fully loaded.
Environmental	
Operating Temperature	0–50°C
Storage Temperature	-20–60°C
Humidity	0–95% RH, Non-condensing
Physical Properties	
Housing	Aluminum Die-casting Housing
Weight	0.28 kg (0.62 lb)
Dimensions (L x W x H)	12.20 x 5.80 x 2.58 cm (4.8 x 2.28 x 1.02 in.)
Note	For some of rack mount products, please note that the standard physical dimensions of WxDxH are expressed using a LxWxH format.

Diagram



ATEN International Co., Ltd.

3F., No.125, Sec. 2, Datong Rd., Sijhih District., New Taipei City 221, Taiwan
Phone: 886-2-8692-6789 Fax: 886-2-8692-6767
www.aten.com E-mail: marketing@aten.com



© Copyright 2015 ATEN® International Co., Ltd.
ATEN and the ATEN logo are trademarks of ATEN International Co., Ltd.
All rights reserved. All other trademarks are the property of their respective owners.