

## VE814R

HDMI HDBaseT Receiver with Dual Output (4K@100m)  
(HDBaseT Class A)



Place your HDMI displays up to 100 meters away from your HDMI source devices with the VE814R HDMI Receiver over single Cat 5 with Dual Display. Connecting to the [VE814T](#) transmitter via affordable and easily available Cat 5e/6 cable, your media can be streamed to up to three HDMI displays – dual displays connected to the receiver and another to the transmitter.

The VE814R also carries an Ethernet pass-through port for Internet connectivity, as well as RS-232 and IR signaling pass-through, which allows you to control the HDMI source device from the remote unit (VE814R) while also granting access to the HDMI display device from the local unit ([VE814T](#)). The VE814R is HDMI (3D, Deep Color, 4K) and HDCP compatible, ensuring superior video quality and peak performance from your HDMI displays.



### Features

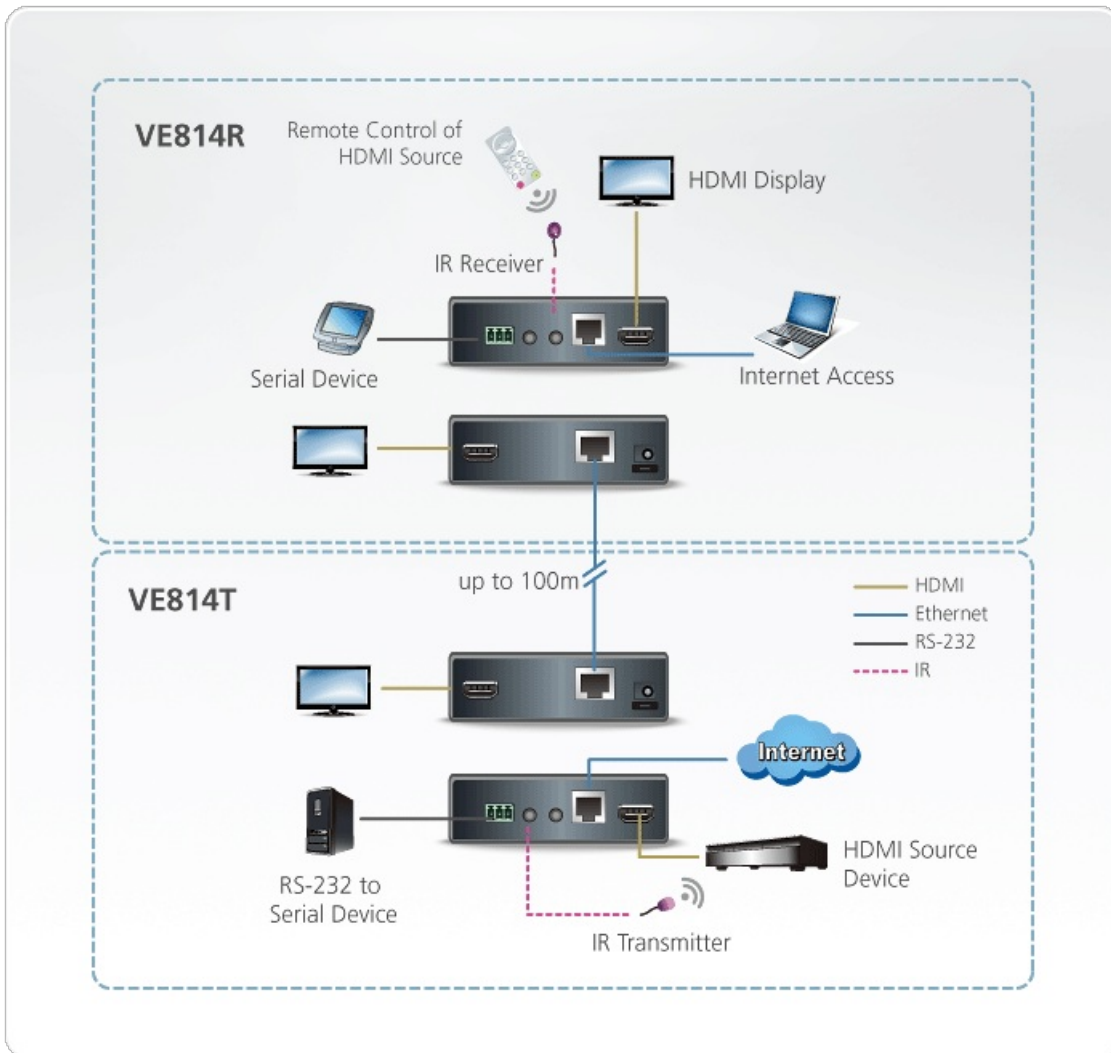
- Extends the distance between HDMI source and HDMI display
- Implements HDBaseT extension technology using only one Cat 5 cable to connect the transmitter and receiver
- Anti-jamming – resists signal interference during high-quality video transmissions using HDBaseT technology
- Supports one local and two remote displays
- Supports two IR channels for bi-directional IR signal transmission
- Extends Ethernet communication with pass-through port
- HDMI (3D, Deep Color, 4Kx2K); HDCP Compatible
- Long distance transmission – up to 100 m
- Supports wide screen
- Supports resolutions of up to Ultra HD 4Kx2K and 1080p Full HD
- Supports up to 340 MHz bandwidth for high performance video
- EDID Expert – selects the optimum EDID settings for smooth power-up and highest quality display
- RS-232 Serial Port for serial device peripherals, such as touch screens, bar coders scanners, and so on
- Built-in 8KV / 15KV ESD protection (Contact voltage 8KV; Air voltage 15 KV)
- Easy to install – no software required
- Rack Mountable

### Specifications

|              |                                |
|--------------|--------------------------------|
| Video Output |                                |
| Interfaces   | 2 x HDMI Type A Female (Black) |

|                             |  |
|-----------------------------|--|
| Impedance                   | 100 Ω  |
| Video                       |  |
| Max. Data Rate              | 10.2 Gbps (3.4 Gbps Per Lane)  |
| Max. Pixel Clock            | Up to 340 MHz  |
| Compliance                  | HDMI (3D, Deep Color, 4K)<br>HDCP Compatible<br>Consumer Electronics Control (CEC)   |
| Max. Resolutions / Distance | Up to 4K@70m (Cat 5e/6) / 100m (cat 6a);<br>1080p@100m<br>*4K supported:<br>4096 x 2160 / 3840 x 2160 @ 60Hz (4:2:0);<br>4096 x 2160 / 3840 x 2160 @ 30Hz (4:4:4)  |
| Audio                       |  |
| Output                      | 2 x HDMI Type A Female (Black)   |
| Control                     |  |
| RS-232                      | 1 x Terminal Block, 3 Pole   |
| IR                          | 2 x Mini Stereo Jack Female (Black)  |
| Ethernet                    | 1 x RJ-45 Female   |
| Connectors                  |  |
| Power                       | 1 x DC Jack  |
| Power Consumption           | 5.3 VDC, 13.3W<br><br>Note:<br><ul style="list-style-type: none"> <li>● The measurement in Watts indicates the typical power consumption of the device with no external loading.</li> <li>● The measurement in BTU/h indicates the power consumption of the device when it is fully loaded.</li> </ul> |
| Environmental               |  |
| Operating Temperature       | 0-50°C   |
| Storage Temperature         | -20 - 60°C   |
| Humidity                    | 0 - 80% RH, Non-Condensing   |
| Physical Properties         |  |
| Housing                     | Metal  |
| Weight                      | 0.46 kg ( 1.01 lb )  |
| Dimensions (L x W x H)      | 14.17 x 10.30 x 3.00 cm<br>(5.58 x 4.06 x 1.18 in.)  |
| Carton Lot                  | 5 pcs  |
| Note                        | For some of rack mount products, please note that the standard physical dimensions of WxDxH are expressed using a LxWxH format.  |

Diagram



**ATEN International Co., Ltd.**

3F., No.125, Sec. 2, Datong Rd., Sijhih District., New Taipei City 221, Taiwan  
 Phone: 886-2-8692-6789 Fax: 886-2-8692-6767  
 www.aten.com E-mail: marketing@aten.com



© Copyright 2015 ATEN® International Co., Ltd.  
 ATEN and the ATEN logo are trademarks of ATEN International Co., Ltd.  
 All rights reserved. All other trademarks are the property of their respective owners.